

## Cytotoxic and Apoptotic Effects of Para-Hydroxy Meta Methoxy Chalcone (*pHmMC*) on T47D Breast Cancer Cells\*

Retno Arianingrum<sup>1</sup>, Retno Sunarminingsih<sup>2</sup>, Edy Meiyanto<sup>2</sup>, Sofia Mubarika<sup>3</sup>

<sup>1</sup>Department of Chemistry Education, Faculty of Mathematics and Natural Science, Universitas Negeri Yogyakarta, Yogyakarta, 55281, Indonesia

<sup>2</sup>Faculty of Pharmaceutical, Universitas Gadjah Mada, Yogyakarta, 55281, Indonesia

<sup>3</sup>Faculty of Medicine, Universitas Gadjah Mada, Yogyakarta, 55281, Indonesia

### ABSTRACT

para-Hydroxy meta methoxy chalcone (*pHmMC*), a chalcone derivate of 3 - (4'-hydroxy-3'-methoxyphenyl)-1-phenyl-2-propene-1-on, was investigated on its cytotoxicity, apoptosis induction, and Bcl-2 expression against human breast cancer-T47D cell lines. The cytotoxic effect was analysed using MTT [3-(4,5 dimethylthiazol-2-yl)-2,5-diphenyltetrazolium bromide] assay, the apoptotic effect was determined by Annexin-V flowcytometry method, and the expression of Bcl-2 was identified using immunocytochemistry method. The research results showed that the *pHmMC*'s IC<sub>50</sub> on T47D cells was 48  $\mu$ M, and it increased the apoptotic induction and decreased the Bcl-2 expression level.

**Keywords:** 3 - (4'-hydroxy-3'-methoxyphenyl)-1-phenyl-2-propene-1-on (*pHmMC*), cyto-toxic effect, apoptosis induction, Bcl-2 expression, T47D breast cancer cells

### INTRODUCTION

Cancer is the second most fatal disease after heart attack. Breast cancer is one type of cancer that has high prevalence and the second most common cancer worldwide which causes mortality<sup>1</sup>. In Indonesia, breast cancer is the second most frequent one in women after cervical cancer<sup>2</sup>. Current cancer therapies (surgery, radiation, immunotherapy, and chemo-therapy)<sup>3</sup> lead to undesired physical and psychological distress to the patients. So that researches on finding new anticancer compounds that have better therapeutic efficacy and fewer side-effects are still needed. Chalcones (derivates of trans-1, 3-diaryl-2-propen-1-on)<sup>4</sup>, are biosynthetic products of the shikimate pathway and are precursors for biosynthesis of open chain flavonoids and isoflavonoids. These compounds are abundant in edible plants. Chalcones can be synthesized through an aldol condensation reaction between benzaldehyde and acetophenone in the presence of strong bases. There are also some reports of chalcone production through an acid-catalysed aldol condensation<sup>5</sup>. Chalcone and its derivates have been attracting attention due to their numerous pharmacological applications. They have displayed a broad spectrum of pharmacological activities, one of them is as anticancer<sup>6-10</sup>. Many chalcones and their derivates have been shown to induce apoptosis in different types of cancer cells through a wide variety of mechanisms. These compounds have a common target, the Bcl-2 protein, which can induce apoptosis in cancer cells<sup>11-14</sup>. A chalcone derivate compound, *pHmMC* or 3 - (4'-hydroxy-3'-methoxyphenyl)-1-phenyl-2-propene-1-on was synthesized by reaction between vanillin and

acetofenon through a cross-aldol condensation reaction under acidic conditions<sup>15</sup>. A study reported that this compound inhibited the cell cycle of breast cancer cell lines (T47D and MCF-7)<sup>16</sup> through the phase of G<sub>2</sub>/M, and induced apoptosis in MCF-7<sup>17</sup>. However, there has been no research on how it affects apoptosis and Bcl-2 protein expression in T47D cells. In this study, the effects of cytotoxicity, apoptosis induction and Bcl-2 expression of *pHmMC* on breast cancer cell lines T47D were investigated.

### MATERIAL AND METHODS

#### Material: *pHmMC* Solution

*para*-Hydroxy *meta* methoxy chalcone (*pHmMC*) was obtained from Prof. Indyah Sulisty Arty. The compound was produced through a cross-aldol condensation reaction of vanillin and acetofenon in an acidic condition. The compound was used as a stock solution with concentration of 100 mg/ml in dimethylsulfoxide (DMSO). The final concentration of DMSO in the study wells was kept less than 0.1%.

#### T47D Cell Culture

Human breast cancer cells of T47D cell-line was obtained from the collection of the Laboratory of Parasitology, Faculty of Medicine, Universitas Gadjah Mada (UGM). The cells were grown in medium culture of DMEM (Dulbecco's modified Eagle's Medium) from Gibco which containing 10% FBS (Fetal Bovine Serum, Gibco) and 1% penicillin-streptomycin (Gibco), and was incubated at 37°C in a humidified atmosphere of 5% CO<sub>2</sub>-95% air. Trypsin-EDTA 0.025% (Gibco) solution was used to detach cells on the flask.

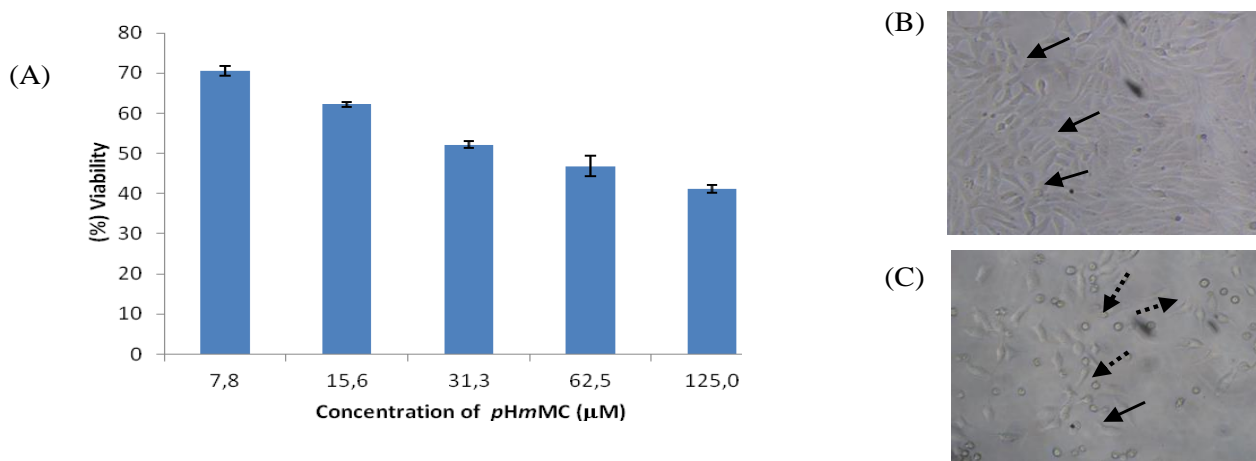


Figure 1: The cytotoxic effect of *pHmMC* on T47D cells was determined using MTT assay. The studies were conducted by incubating  $5 \times 10^3$  cells in 96 well plates for 24 hours in DMEM medium without or with *pHmMC* treatments of 7.8; 15.6; 31.3; 62.5 and 125  $\mu\text{M}$ . The profile of cell viability is expressed in mean  $\pm$  SD from three experiments (A). The morphological changes and cell populations under the treatment of *pHmMC* concentrations of 0  $\mu\text{M}$  or control (B) were compared to that of 31.3  $\mu\text{M}$  (C).

#### Cytotoxic Assay

Cytotoxic assay was conducted using [3-(4, 5-dimethylthiazol-2-yl) - 2,5 diphenyltetrazolium bromide] (MTT) assay. The T47D cells were seeded and plated on a 96 tissue culture well-plate with cell density of  $5 \times 10^3$  cells per well. Each well then was added with various concentrations of *pHmMC*, and incubated for 24 hours. After 24 hour-incubation, the medium was removed from each well and the cells were washed with Phosphate Buffered Saline (PBS) of Sigma, and then were added with 100  $\mu\text{l}$  of solution of 0.5 mg/ml MTT (Sigma) in the culture medium. The treated cells were then stayed for 4 hours to proceed the production of formazan (the indicator). A stopper reagent of 10% Sodium dodecyl sulphate (SDS) of Sigma in 0.01M HCl (Merck) was added and incubated for 12 hours or overnight at room temperature and protected from light. The absorbance of each well was measured using ELISA reader (Bio-Rad) at  $\lambda$  595 nm. The absorbance was converted to a percentage of viable cells<sup>18</sup>. The  $\text{IC}_{50}$  value was calculated by the concentration that caused 50% inhibition of cell growth<sup>19</sup>. Calculations of the  $\text{IC}_{50}$  value were done using the linear regression of log concentration versus cells viability.

#### Apoptosis Analysis

T47D cells were seeded on a six tissue culture well-plate at  $5 \times 10^5$  cells per well. After 24 hours incubation the cells were treated with various concentration of *pHmMC*. After incubation the cells were removed using 0.25% trypsin solution and then spinned at 2000 rpm for 3 minute, and then washed twice with cold PBS. The cells were re-suspended in 500  $\mu\text{l}$  of Annexin V buffer (Roche) and then treated with Annexin V and propidium iodide (PI) for 10 minutes at room temperature and protected from light. The treated cells were subjected to a FAC-Scan flow-cytometer. Bivariate analysis of FITC-fluorescence (FL-1) and PI-fluorescence (FL-3) gave different cell populations where the phenotype of FITC (-) and PI (-) were designed as viable cells, while the FITC (+) and PI (-) as early apoptotic cells; the FITC (-) and PI

(+) as necrotic cells; and the FITC (+) and PI (+) as late apoptotic cells.

#### Immunocytochemistry method

T47D cells were seeded on the coverslips of a 24 well-plate at  $5 \times 10^4$  cells per well and incubated for 24 hours (or until 80% confluent). The medium in each well was then replaced by the fresh medium containing various concentrations of *pHmMC* and then placed in a humidified incubator at 37 °C within an atmosphere of 5%  $\text{CO}_2$  and 95% air for 24 hours. The cells were then harvested and were washed with PBS and fixed with cold methanol for 10 minutes at -4°C freezer. After that, the cells in coverslips were placed each on a respective slide. The cells were washed with PBS and distilled water, then were blocked in a hydrogen peroxide blocking solution for 10 minutes at room temperature. They were again washed with PBS, and then incubated with pre-diluted blocking serum for 10 minutes at room temperature. Next, the cells were stained with primary Bcl-2 antibody for 1 hour at room temperature. After three time-washing with PBS, the secondary antibody was applied for 15-20 min, and then washed with PBS three times. The slides were incubated with streptavidin-biotin complex for 10 minutes, and then washed with PBS three times. The slides were incubated in DAB (3, 3 diaminobenzidine) solution for 3-5 minutes and washed with distilled water. Cells were counterstained with Mayer-Haematoxylin reagent for 3-4 minutes. After incubation, the coverslips were washed with distilled water and then immersed in absolute ethanol and in xylol afterward. The protein expression was assessed under a light microscope. Cells which with expression give a dark brown color in the cell membrane, while the cells with no expression will give purple color.

## RESULTS AND DISCUSSION

#### The cytotoxic effect of *pHmMC* on T47D cells

The viability of T47D cells were measured using MTT assay. This assay was done to determine the inhibitory

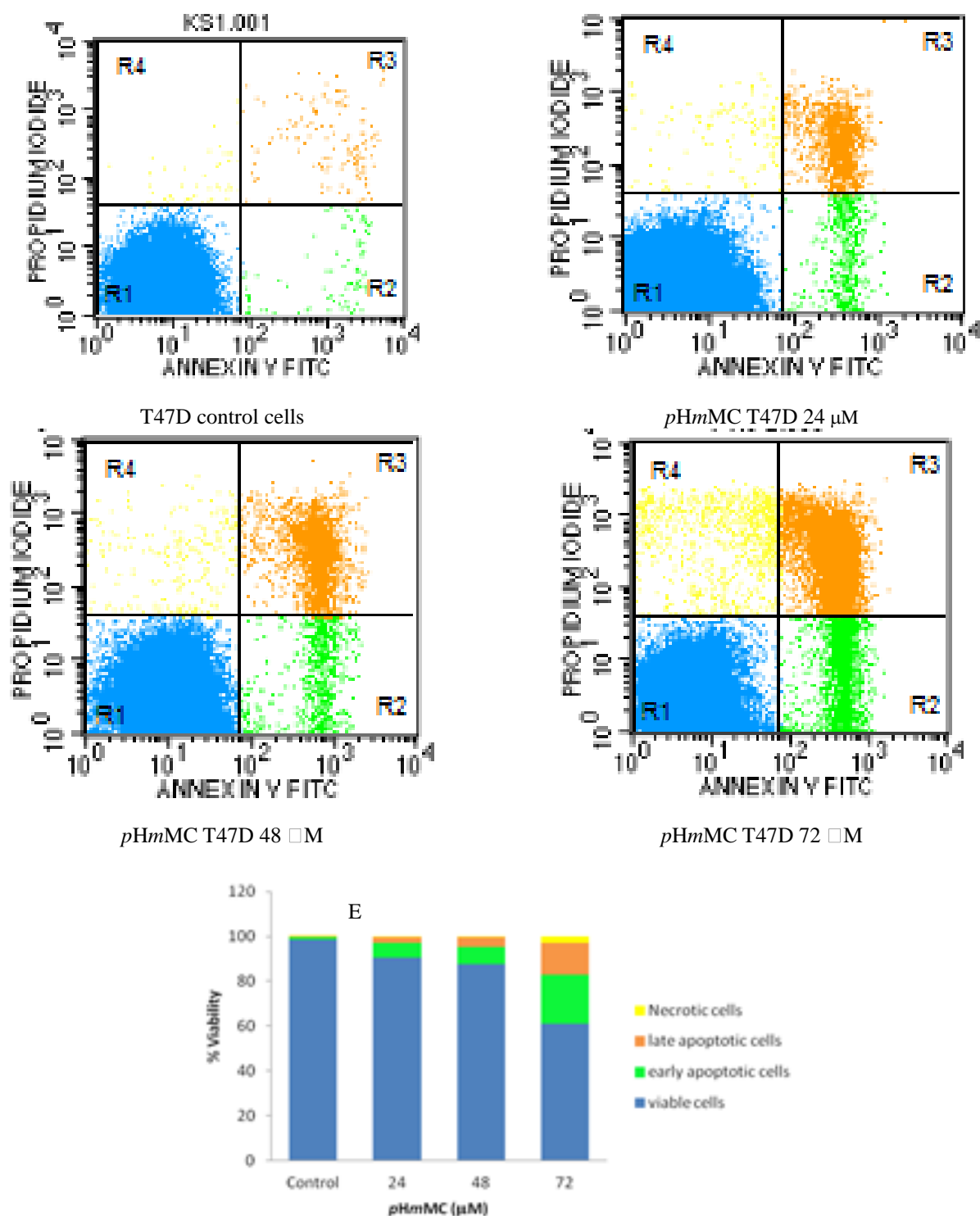


Figure 2: The effect of *pHmMC* on the apoptosis induction of T47D cells. The cells were seeded at  $5 \times 10^5$  cells/well on six wells tissue culture plate, then treated with *pHmMC* concentrations of 0,  $\frac{1}{2}$  IC<sub>50</sub>, IC<sub>50</sub>, and  $\frac{1}{2}$  IC<sub>50</sub>. After 24 hours incubation, cell were harvested as described in the methodology, added with AnnexinV and PI reagents, were then subjected to FACS flow-cytometer. The flowcytometric profiles of cells were treated respectively with 0 μM or control (A), 24 μM (B), 48 μM (C), and 72 μM (D).

concentration (IC<sub>50</sub>) of the *pHmMC* treatment. The result showed that all treatments of the *pHmMC* inhibited the cell growths (Fig.1). Based on the *pHmMC* treatments and the cell viabilities affected, there was a linear correlation between the *pHmMC* treatment -

concentrations of 7.8; 15.6; 31.3; 62.5 and 125 μM versus their toxicity effects; with the IC<sub>50</sub> of 48 μM (P<0.05). The *pHmMC* treatment led to T47D cell morphological changing. The cytotoxic effect could be related to an apoptotic induction effect.

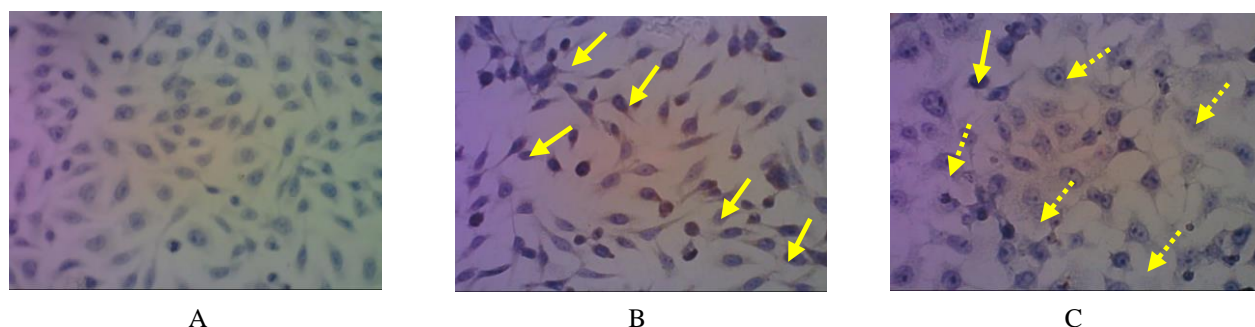


Figure 3: The expression of Bcl-2 on T47D cells was determined using immunocytochemistry method. (A) is the control cells without antibody, (B) control cell with Bcl-2 Ab, and (C) *pHmMC* 24  $\mu$ M.

#### The *pHmMC* effect on apoptosis induction

The apoptotic induction effect of *pHmMC* treatment on T47D cells was determined using flow-cytometric method. The method detects the translocations of phosphatidyl serine-residues which are in the internal phospholipid layer (in normal cell) and at the external layer (in apoptotic cells). The result showed that *pHmMC* induced the T47D cell apoptosis at early and late phases of cell apoptosis with rates as shown in Fig.2. The percentage of apoptotic cells increased after treatment with *pHmMC*. Increasing in concentration of *pHmMC* treatment causes more T47D cells undergo apoptosis.

#### The effect of *pHmMC* on Bcl-2 expression

To confirm the mechanism of *pHmMC*'s induced apoptosis, a study on the effect of *pHmMC* on the expression of Bcl-2 was conducted using an immunocytochemistry method. Bcl-2 is a protein which suppresses cell apoptosis. Interestingly, the expression of Bcl-2 of the *pHmMC* treated cells was lower compared to that of the control cells (Fig.3). These data showed that *pHmMC* has potency to induce cell apoptosis by suppressing the Bcl-2 expression. The research results showed that compound *pHmMC* has anticancer potency, especially through its inhibition on the cell proliferation. It has cytotoxic effect to human breast cancer cell-lines T47D with  $IC_{50}$  of 48  $\mu$ M. Prayong<sup>20</sup> mentioned that compound with  $IC_{50}$  less than 100  $\mu$ M is potentially to be developed as anticancer agent. The cytotoxic effect of *pHmMC* could be related with its ability to accelerate the cell apoptosis, as shown by the data that *pHmMC* induced apoptosis in T47D cells. Apoptosis is a programmed-cell death which is characterized by changes on cell morphology, membrane blabbing and chromatine<sup>21</sup>. In this study, the characteristic changes of cell morphology, such as cell shrinking, nuclear fragmentation, and cell apoptosis were more extensive after the treatment with *pHmMC* (Fig.3). The flow-cytometry analysis showed that treatment with *pHmMC* at 48  $\mu$ M increased the cell death from 1.26% to 11.28%, and increased up to 36.1% after treatment with 72  $\mu$ M *pHmMC*. These data indicated that *pHmMC* compound is able to induce apoptosis. Ability in inducing apoptosis on cancer cells is an important property for a prospective anticancer drug because cancer cells generally are capable to evade apoptosis. Apoptosis process occurs via various mechanisms. NF- $\kappa$ B protein inhibits apoptosis through

increasing transcription of Bcl-2 that prevents the release of cytochrome c by Bax in mitochondria<sup>22</sup>. The inhibition of NF- $\kappa$ B also causes decreasing of Bcl-2 and Bcl-XL expressions, two main anti apoptotic proteins. The study showed that the *pHmMC* treatment decreased the level of Bcl-2 which in turn induced the T47D cell's apoptosis. Some references stated that the main structure of chalcones, that is 1,3-diphenyl-2-propenone, has been proven to have a chemopreventive effect on human breast cancer cell lines of MCF-7 and MDA-MB-231<sup>23</sup> and human bladder cancer cell lines of T24 and HT-1376<sup>24</sup>. It was showed to inhibit the proliferation of T24 and HT-1376 cells by inducing apoptosis and blocking cell cycle progress at G2/M phase. It significantly increased the expression of p21 and p27 proteins, and decreased the levels of cyclin B1, cyclin A and Cdc2, which contribute the cell cycle arrest. Moreover it increased the expression of Bax and Bak, and decreased the levels of Bcl-2 and Bcl-XL which subsequently triggered mitochondrial apoptotic pathway via releasing cytochrome c and activating caspase-9 and caspase-3. The bold arrow indicates normal living cells, whereas the dashed arrows indicate the cell morphology changes. The cell morphology was observed using inverted microscope with 100x magnification. There are four quadrants: the lower left (R1), marked in blue, indicates viable cells, the lower right (R2), marked in green, indicates early apoptotic cells, the upper right (R3), marked in orange, indicates late apoptotic cells, and the upper left (R4), marked in yellow, indicates necrotic cells. The graph (E) showed that *pHmMC* induced apoptosis. The experiment used DAB as the chromogen. Dark brown staining in cell's cytoplasm and mitochondria membrane indicated the positive expression of Bcl-2. Cells which showed purple colour after counterstained with Mayer-Haematoxilin indicated negative expression of Bcl-2. The bold arrow indicates the positive expression, whereas the dashed arrows indicate the negative expression of the protein. Chalcone has also an inhibitor activity to Nuclear factor kappa B (NF- $\kappa$ B) at concentration of 50  $\mu$ M. NF- $\kappa$ B is a transcription factor that plays a major role in development and progression of cancer because it regulates more than 400 genes involved in inflammation, cell survival, cell proliferation, invasion, angiogenesis, apoptosis, cell cycle and metastasis<sup>25,26</sup>. The study's compound, *pHmMC*, is a chalcone derivate that has -3'

methoxy and -4' hydroxyl phenyl moieties. Based on the references, those structure modifications still retain the cytotoxic activity of chalcones. It was showed that increased apoptosis induction via suppressing Bcl-2 level in T47D cells. So that *pHmMC* may have potential effects on the NF- $\kappa$ B survival system which play important roles in the anti-proliferative activity on the T47D cells. The detail molecular mechanism of the apoptotic induction is still needs to be explored.

## CONCLUSION

*para*-Hydroxy *meta* methoxy chalcone (*pHmMC*) has properties of suppressing on the expression of Bcl-2 and inducing apoptosis of T47D cells. It is a potential compound to be explored and developed as a chemopreventive agent for breast cancer.

## ACKNOWLEDGEMENT

Acknowledgement is dedicated to Prof. Indyah Sulistyio Arty, faculty member of the Faculty of Mathematic and Natural Science, Universitas Negeri Yogyakarta (UNY), Indonesia for her generous gift of compound 3 - (4'-hydroxy-3'-methoxyphenyl)-1-phenyl-2-propene-1-on (*pHmMC*) for this research.

## REFERENCES

- Parkin DM, Bray F, Ferlay J, Pisani P. Global cancer statistic. *CA Cancer J Clin* 2008; 55, 74-108
- Tjindarbumi D, Mangunkusumo R. Cancer in Indonesia, Present and Future. *Jpn. J. Clin. Oncol* 2002; 32 (Supplement 1): S17-21
- King RJB. *Cancer Biology*. Pearson Education. Second Edition, England, 2000, 1-7, 228-231, 263-264
- Motta LF, Gaudio AC, Takahata Y. Quantitative structure-activity relationships of a series of chalcone derivatives (1,3-diphenyl-2-propen-1-one) as anti-Plasmodium falciparum agents (antimalaria agents). *Internet Electronic Journal of Molecular Design* 2006; 5:555-569.
- Rahman MA. Chalcone: A valuable insight into the recent advances and potential pharmacological activity. *Chemical Sciences Journal* 2011; 29: 1-6
- Achanta G, Modzelewska A, Feng L, Khan SR, Huang P. A boronic-chalcone derivative exhibits potent anticancer activity through inhibition of the proteasome, *Molecular Pharmacology* 2006; 70:426-433
- Romagnoli R, Baraldi PG, Carrion MD, Cara CL, Cruz-Lopez O, Preti D, 2008. Design, synthesis and biological evaluation of thiophene analogues of chalcones. *Bioorganic and Medicinal Chemistry* 2008; 16: 5367-5376.
- Echeverria C, Santibanez JF, Donoso-Tauda O, Escobar CA, Tagle RR. Structural antitumoral activity relationships of synthetic chalcones. *International Journal of Molecular Sciences* 2009; 10:221-231
- Szliszka E, Czuba ZP, Mazur B, Sedek L, Paradysz A, Krol W. Chalcones enhance TRAIL-induced apoptosis in prostate cancer cells. *International Journal of Molecular Sciences* 2010; 11:1-13.
- Ilango K, Valentina P, Saluja G. Synthesis and in-vitro anticancer activity of some substituted chalcone derivatives. *Research Journal of Pharmaceutical, Biological and Chemical Sciences* 2010; 1:354-359
- Kim NY, Pae HO, Oh GS, Kang TH, Kim YC, Rhew HY. Butein, a plant polyphenol, induces apoptosis concomitant with increased caspase-3 activity, decreased Bcl-2 expression and increased Bax expression in HL-60 cells. *Pharmacol Toxicol* 2001; 88:261-6.
- Ye CL, Qian F, Wei DZ, Lu YH, Liu JW. Induction of apoptosis in K562 human leukemia cells by 2',4'-dihydroxy-6'-methoxy-3',5'-dimethylchalcone. *Leuk Res.* 2005; 29:887-92.
- Hsu YL, Kuo PL, Tzeng WS, and Lin CC. Chalcone inhibits the proliferation of human breast cancer cell by blocking cell cycle progression and inducing apoptosis. *Food and chemical toxicology: an international journal published for the British Industrial Biological Research Association* 2006; 44(5): 704-13.
- Shen KH, Chang JK, Hsu YL, and Kuo PL. Chalcone arrests cell cycle progression and induces apoptosis through induction of mitochondrial pathway and inhibition of nuclear factor kappa B signalling in human bladder cancer cells. *Basic Clin Pharmacol Toxicol* 2007; 101: 254-61.
- Arty SA. Synthesize and cytotoxic test of several compounds of mono para hydroxy Chalcones. *Indo J. Chem* 2010; 10 (1) 110-115
- Arianingrum R, Sunarminingsih R, Meiyanto E, Mubarika S. Potential of a chalcone derivate compound as cancer chemoprevention in breast cancer. *IPCBE* 2012; 38: 41-45
- Arianingrum R, Sunarminingsih R, Meiyanto E, Mubarika S. Cytotoxic effect of para hydroxyl chalcone (*pHmMC*) on MCF-7 breast cancer cells by inducing cell arrest and apoptosis. *2nd ICRIEMS proceedings* 2015; C-11:89-95
- Mosmann T. Rapid colorimetric assay for cellular growth and survival: application to proliferation and cytotoxicity assays. *J. Immunol Methods* 1983; 65: 55-63
- Doyle A, Griffith JB. *Cell and tissue culture for medical research*. New York: John Wiley and Sons Ltd. 2000
- Prayong P, Barusrux S, Weerapreeyakul N. Cytotoxic activity screening of some indigenous Thai plants. *Fitoterapia*. 2008; 79:598-601.
- Rudin CM, Thompson CB. Regulation and clinical relevance of programmed cell death. *Annu Rev Med* 1997; 48: 267-281.
- Simstein R, Burow M, Parker A, Weldon C, Beckman B. Apoptosis, chemoresistance, and breast cancer: Insights from the MCF-7 cell model system. *Exp Biol Med* 2003;101:995-1003
- Hsu YL, Kuo PL, Tzeng WS, Lin CC. 2006, Chalcone Inhibits the Proliferation of Human Breast Cancer Cell by Blocking Cell Cycle Progression and Inducing

- Apoptosis. *Food and chemical toxicology: an international journal published for the British Industrial Biological Research Association* 44(5): 704–13.
24. Shen KH, Chang JK, Hsu YL, Kuo PL., 2007, Chalcone arrests cell cycle progression and induces apoptosis through induction of mitochondrial pathway and inhibition of nuclear factor Kappa B signalling in human bladder cancer cells. *Basic Clin Pharmacol Toxicol* 2007; 101: 254–61.
25. Yadav VR, Prasad S, Sung B, Anggarwal BB. The role of chalcones in suppression of NF-kB-mediated inflammation and cancer. *International Immunopharmacology* 2011; 11 (3) : 295-309
26. Pahl HL, 1999, Activators and Target Genes of Rel/NF-kappaB Transcription Factors. *Oncogene* 18(49): 6853–66.



# International Journal of Pharmaceutical and Clinical Research

**Country** [Australia](#) - [SJR Ranking of Australia](#)

**Subject Area and Category**

[Medicine](#)  
[Pharmacology \(medical\)](#)  
[Pharmacology, Toxicology and Pharmaceutics](#)  
[Drug Discovery](#)  
[Pharmaceutical Science](#)

9

H Index

**Publisher** [International Journal of Pharmaceutical and Clinical Research](#)

**Publication type** Journals

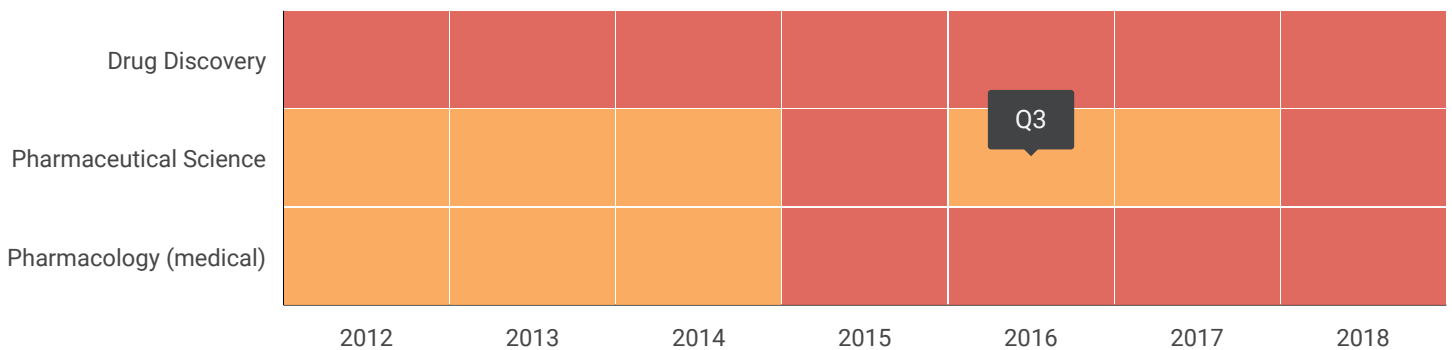
**ISSN** 09751556

**Coverage** 2011-2016 (cancelled)



- [Homepage](#)
- [How to publish in this journal](#)
- [Contact](#)
- [Join the conversation about this journal](#)

## Quartiles



SJR



Citations per document

